



SACHA

L O D G E

amazon . ecuador



Imagine yourself drifting down a narrow, winding creek surrounded on all sides by a lush, endless sea of tropical greenery, and all that separates you from the deep black Amazon waters is a canoe hand-carved out of a single tree trunk. As you maneuver around a bend something unidentified crashes off into the underbrush, and you catch a glimpse of two magnificent Blue and Yellow Macaws startled into flight.



Getting to Sacha Lodge

Your journey to Sacha begins in Quito, Ecuador's capital city. From here, embark on a 35-minute flight over the majestic snow-capped peaks of the Andes Mountains and then down 8,500 ft (2,600 meters) into the Amazon Basin. Arrive at Puerto Francisco de Orellana, locally known as Coca, you will be met by a

naturalist guide and taken to Sacha's private house, with modern facilities, where you will be served lunch before being taken to the town docks. Here Sacha's own covered, motorized canoe will be waiting to take you on a 2-hour, 50-mile (80-kilometer) journey down the Rio Napo, one of the Amazon River's tributaries.

Upon arrival to Sacha's 5,000-acre (1,500-hectare) private reserve, a 30-minute walk on a raised boardwalk will lead you to Lake Pilchicocha. Here, native paddlers will be waiting with dug-out canoes to carry you across the lake to your final destination.

Welcome to Sacha Lodge!

Accomodations

The lodging at Sacha was carefully designed to offer comfort for our guests yet preserve the environment and rainforest ambience. Each of our 26 cabins comes fully equipped with modern amenities such as ceiling fans and electrical outlets. The cabins were constructed with traditional rainforest materials. In our rooms, guests may overlook the jungle from hammocks and often report seeing wild fauna such as black-mantle Tamarin's, beautifully colored birds, and many other amazing creatures all while resting between activities!



Activities

Sachas guests will be divided into groups no larger than six people. Each group will be led by a bilingual naturalist guide, and a native Quichua guide with ancestral knowledge of the rainforest. A typical day at Sacha begins at sunrise, in order to take advantage of the cool morning hours when animals are most active. In the afternoon excursions begin between 3:00 and 4:00 and often continue into the early evening, A night activity is offered every evening.

Cultural engagement

Located ten minutes across de Napo River, the Nueva Providencia Interpretation Center, a brand new initiative of the Kichwa community of Nueva Providencia and supported by Sacha Lodge, offers our guests the opportunity to share with the women from the community and learn about the Kichwa lifestyle. They will show us different fibers used for weaving, traditional pottery and other aspects of the daily lives of local people. Finally, the visit culminates with a tasting of the local cuisine!



©Murray Cooper

©Murray Cooper

Sacha's Special Attractions

The Observation Tower

Constructed next to an ancient Kapok Tree, our 135-foot (43 meter) observation tower, with an amazing 360 view, is definitely one of Sacha's highlights. However getting to the tower is half the fun! Take an exhilarating 30-minute dug-out canoe ride through an eerie flooded forest. Watch in amazement as Capuchin and Squirrel monkeys jump from branch to branch right over your head!

The 500sq feet (50m²) tower platform allows guests to enjoy the rainforest canopy. Be it shortly after sunrise or just before sunset, a trip to the tower to observe Toucans, Parrots, and dozens of other colourful birds, is an experience not to be missed.



Sacha's Canopy Bird Walk

One of only a few rigid, self-standing suspension canopy walkways in the world, Sacha's new addition is also one of the largest such walkways on the planet!

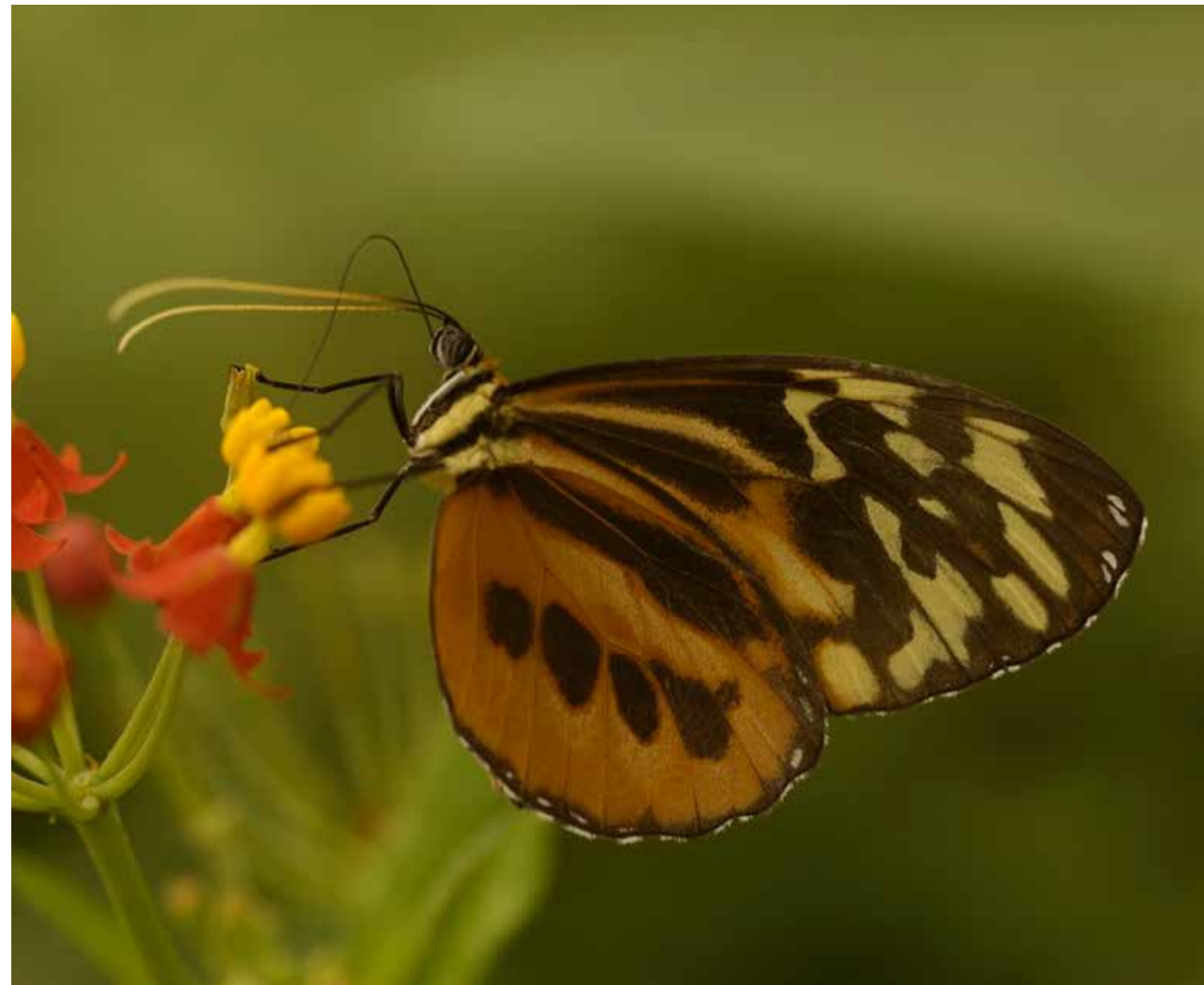
Located within Sacha's private reserve, 2 miles from the shores of the Rio Napo and 1 mile from the lodge, the bird walk gives guests the opportunity to get an up close and personal view of the rainforest canopy. Two of the three towers have observation decks every 12 meters (40 feet), making the towers accessible for everyone. The 275 meters (900 feet) long canopy walkway suspended 36 meters (120 feet) above the forest floor, gives guest a "bird's eye view" of all the wonders and beauty the tropical rainforest has to offer. The canopy walk is designed as a sturdy walkway enabling guests to casually move along at their own pace while enjoying the spectacular views.

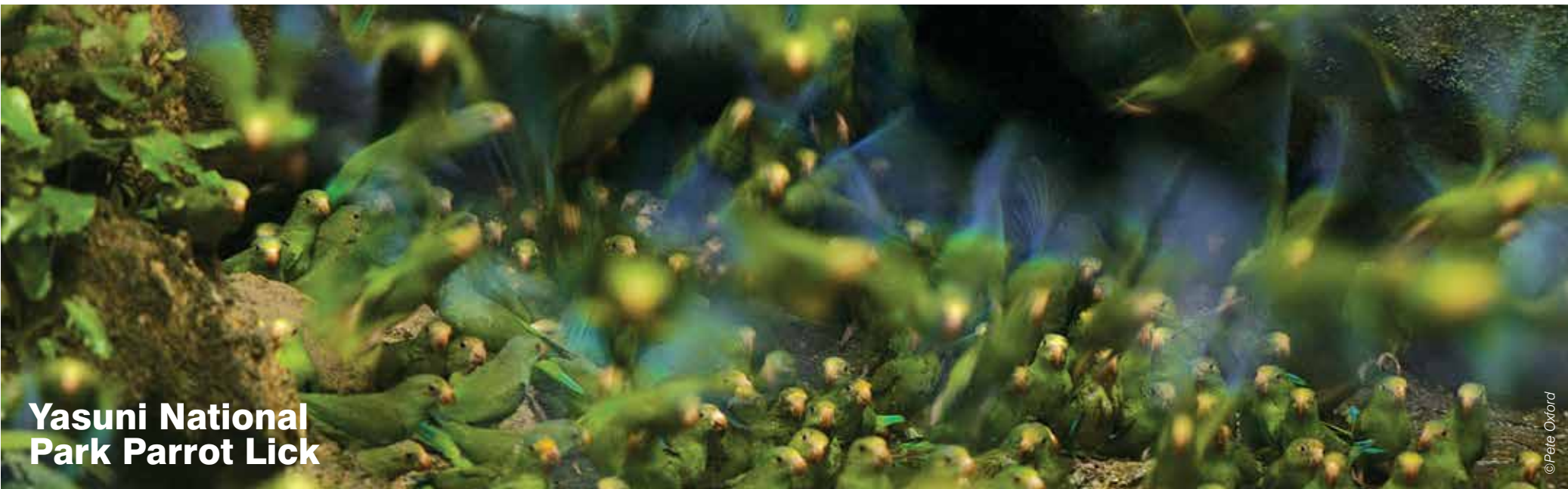


The Butterfly House

Sacha is home to one of Ecuador's largest butterfly farms. Designed as a live exhibition conservatory.

Guests will be given explanations as to how these beautiful and unique insects are bred and raised, and later be free to wander through "the flying room", where hundreds of these colourful butterflies can be seen fluttering from flower to flower.





Yasuni National Park Parrot Lick

©Pete Oxford

Located 30 minutes down stream in the largest protected area in Ecuador, Yasuni National Park is home to the regions most accessible parrot lick. In ideal conditions (sunny and dry), hundreds of brightly colored parrots can be observed eating the exposed clay. Parrots eat a variety of toxic and acidic fruits and the clay acts as an "antacid" to neutralize these toxins in their bodies. Parrots can be seen gathering around the clay bank between 7:00 and 8:00 in the morning for a spectacular display of color and sound. However this activity is strictly weather permitting...the parrots won't be there in the rain!



Tips to help you plan your trip

Health

It is always advisable to consult your physician about health measures and vaccinations before travelling to a foreign country. Although Sacha is well-isolated from local populations and tropical diseases are rare here, you may pass through areas of slightly higher risk. Please take any medication you may need with you.

Emergency Communication

Sacha Lodge has direct radio contact with both Quito and Coca. In case of serious medical emergency, we are able to radio Coca assistance. For minor emergencies, there is a medical center located 20 minutes from Sacha by canoe. Internet connection is available at the Lodge for an additional cost. There is a heli-pad on Sacha's premises.

Itineraries

The normal tour schedule is from Monday to Friday (5 days/ 4 nights) and from Friday to Monday (4 days/ 3 nights). However Sacha can operate programs on any day of the week except Sunday. Longer itineraries and bird specialist guides are also available...consult your travel agent for details.

Flights and Luggage

Flights from Quito to Coca and back are all done with modern jet airplanes from a national airline. Departure times are mid-morning and operate everyday except Sunday. For the flight to Coca, the airlines require that checked luggage be limited to 44 pounds (20 kg) per person. Heavier equipment

such as cameras and binoculars may be taken in carry-on bags if necessary.

On The Canoe

Sacha's canoes are covered to protect guests from the sun and rain. Ponchos are provided for all guests of Sacha if necessary. Sunscreen is recommended while on the canoe to protect you from the sun's reflection off the water.

Weather

In the tropical rainforest it is best to be prepared for all kinds of weather. A common question is about the "dry and wet season" of the region. However it is best not to trust such a generalization to plan a trip to the Amazon. At times it can be hot and sunny, but a cool rainstorm may appear at a moment's notice during any time of the year. In each of our cabins we have ceiling fans for hot afternoons. However at night (especially after a rain storm) some guests are surprised at the need of a sweatshirt.

Clothing

Lightweight pants and long sleeved cotton shirts are ideal for walks in the forest. Short-sleeved shirts can be worn as well with a light dousing of insect repellent. During a rainstorm, full waterproof clothing is nice to have but can be uncomfortable as it often gets you more wet with sweat than with rain! Ponchos are recommendable for brief tropical storms. Sacha does provide ponchos for all of our guests so if you do not have your own don't worry. Comfortable shoes

(or sandals), shorts and t-shirts are recommended for your stay and while exploring around lodge during mealtime and free time. Rubber boots up to US size 14 are provided for all guests so there is no need to pack bulky boots for your stay at Sacha. And don't forget to pack your bathing suit!

Laundry

Sacha Lodge can provide laundry service (washing and drying) for our guests. Please consult with our lodge administrator for prices.

Bar

Drinks are not included in your package, and may be paid in cash (U.S dollars) and credit cards: Visa, Master Card, or American Express.

Drinking Water

All drinking water provided at Sacha is 100% purified. This water is tested regularly and is perfectly safe for consumption. However, you may purchase bottled water from the bar.

Meal Requirements

Sacha's chef is more than happy to prepare vegetarian meals for you upon request. Please make sure to advise your travel agent of any dietary requirements.

Safety Deposit Box

Each cabin at Sacha has Safety Deposit Box, and Dry Box for guest belongings.



Recommended packing list

- Passport
- Binoculars
- Flashlight (for night activities)
- Camera.
- Insect repellent
- Lightweight long pants and long sleeve shirts
- Shorts and short sleeve shirts
- Bathing suit
- Comfortable shoes and extra socks
- Small day pack
- Light weight rain jacket
- Sunblock, sunglasses and hat



A photograph of a suspension bridge stretching across a misty, forested valley at sunset. The sky is filled with soft, golden light, and the bridge's cables and tower are silhouetted against the bright background. The bridge has a wooden deck and a safety netting railing.

SACHA

L O D G E

Julio Zaldumbide N25-42 y Valladolid . Quito, Ecuador

tel: (593-2) 2509115 . 2509504 . 2566090

fax: (592-2) 2236521

p.o. box: 1701-141

info@sachalodge.com

amazon . ecuador www.sachalodge.com